



*Let's shield our surfaces &
bond our relationships!*

Product Catalogue

About us



Welcome to Amco Paints, where colors come to life!

Established in 2005, we take pride in our legacy of providing high-quality paints that transform spaces. At

Amco, we've been at the forefront of innovation, introducing Low VOC (Volatile Organic Compounds) paints to contribute to a healthier and more sustainable environment.

Our commitment to excellence goes beyond aesthetics; it extends to creating products that meet the highest standards of performance while minimizing environmental impact. With a palette of vibrant colors and a dedication to customer satisfaction, Amco Paints is your trusted partner in adding a touch of brilliance to every surface.

Discover a world of possibilities with Amco Paints – where quality, innovation, and environmental responsibility converge to paint a brighter future.

INDEX

• PROTECTIVE COATINGS

SHIELD YOUR SURFACES WITH OUR ADVANCED PROTECTIVE PAINTS. ENGINEERED TO WITHSTAND THE TOUGHEST CONDITIONS, THESE COATINGS PROVIDE DURABILITY AND RESILIENCE, ENSURING LONG-LASTING PROTECTION FOR YOUR INFRASTRUCTURE.

• MARINE PAINTS

NAVIGATE THE SEAS WITH CONFIDENCE USING OUR SPECIALIZED MARINE PAINTS. FORMULATED TO WITHSTAND HARSH MARINE ENVIRONMENTS, OUR COATINGS OFFER SUPERIOR RESISTANCE TO SALTWATER, UV RAYS, AND OTHER CHALLENGING CONDITIONS, ENSURING YOUR VESSELS STAY VIBRANT AND WELL-PROTECTED.

• DECORATIVE COATINGS

IMMERSE YOUR SPACES IN A WORLD OF COLORS WITH OUR DECORATIVE PAINTS. WHETHER YOU'RE LOOKING FOR TRENDY SHADES OR TIMELESS CLASSICS, OUR PAINTS ARE CRAFTED TO ADD STYLE AND PERSONALITY TO YOUR INTERIORS.

• FUNCRYL ACRYLIC COLORS

FUNCRYL ACRYLIC ARTISTIC COLOURS BRING VIBRANT SHADES, SMOOTH TEXTURE, AND LONG-LASTING FINISH TO EVERY CREATION. DESIGNED FOR ARTISTS OF ALL LEVELS, FUNCRYL DELIVERS RICH PIGMENTATION, EASY BLENDING, AND RELIABLE PERFORMANCE ON ANY SURFACE.

The background of the advertisement is a photograph of an industrial facility. In the foreground, a complex network of bright yellow structural beams, likely part of a bridge or a large industrial structure, dominates the lower half of the frame. These beams are arranged in a crisscross pattern, creating a strong geometric design. In the background, several tall, white industrial smokestacks or chimneys rise into a clear blue sky. The overall scene suggests a large-scale industrial or infrastructure project.

Shield Your World
with our
PROTECTIVE
COATINGS



SURFACE TOLERANCE EPOXY DTM

Surface Tolerant ant Epoxy DTM (Direct-to-Metal) coatings are high-solids, two-pack paints offering superior anti-corrosion protection for metal and concrete, specifically designed for minimal surface prep (even on rusty surfaces) when abrasive blasting is difficult, providing excellent adhesion, chemical resistance, and durability for industrial, marine, and infrastructure projects, acting as primer, mid, or topcoat.



HB EPOXY MIO BROWN/GREY

Epoxy MIO (Micaceous Iron Oxide) coating is a tough, two-component industrial paint used for heavy-duty corrosion protection on steel & concrete, featuring fine iron oxide flakes that align to form a water/oxygen barrier, offering excellent chemical, moisture, and abrasion resistance, ideal for marine, chemical plants, and pipelines where durability in harsh, humid environments is key. It acts as a primer, mid-coat, or even a finish coat, building thickness for superior performance, especially when overcoated with polyurethane.



HB EPOXY GLASS FLAKE PAINT

Glassflake coatings have been proven to be most suitable for application where good corrosion resistance and excellent mechanical properties are required. It has been outstanding corrosion resistance to a wide of acids, alkalis, solvents and salt solutions and excellent thermal stability

Glassflake Coating systems are widely used for chemical process equipment in the form in the form of process vessels, storage tanks pipes and ducts



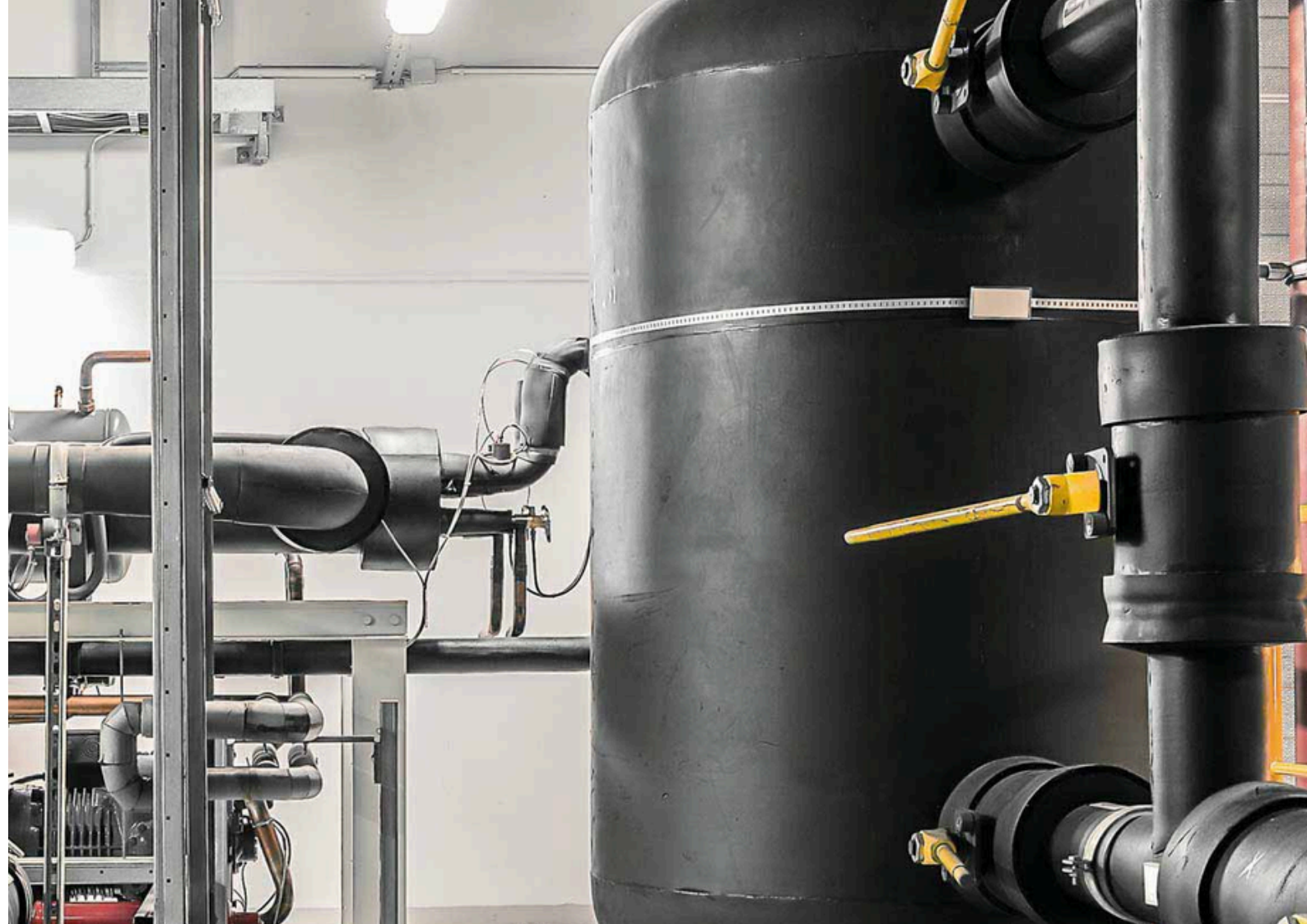
COAL TAR EPOXY

Coal tar epoxy consists of epoxy resins and coal tar. It is a type of polymer used to coat surfaces and protect them from corrosive environments. It is primarily used on metal and concrete in tough settings like industrial and offshore operations, where chemicals, saltwater and other substances can cause deterioration.



ZINC PHOSPHATE PRIMER

- Zinc Phosphate Primer is primarily used as an anti-corrosive primer on iron and steel.
- It can be used for fire escapes, metal gates, metal garage doors and more.
- Zinc phosphate is an excellent method of corrosion resistance, being lighter than other forms of protective plating. Since it can be applied via immersion or using a spray, it can be used with large & small components alike



HEAT RESISTANT PAINT (150'C-650'C)

High Temperature Heat Resistant Aluminium Paint.&
BLACK PAINT

Temperatures up to 600°C. Suitable for direct application to mild steel. This product is ideally suited for commercial and industrial chimney-stacks, general blast furnace applications, furnaces , flues & automobile silencer

The most commonly used heat resistant paint colours include black and silver (also referred to as aluminium).



EPOXY ZINC PHOSPHATE PRIMER

Zinc Phosphate Primers are steel primers formulated with zinc phosphate, a mineral that offers inhibitive or active corrosion protection to protect the steel substrate from corrosion.

Epoxy zinc phosphate primers contain zinc phosphate, which acts as a corrosion-inhibiting pigment. Epoxy primers are used to waterproof materials that consequently protect the bare metal from oxidation. A dry, very clean surface is needed before applying an epoxy primer.



EPOXY ZINC RICH PRIMER

Epoxy zinc rich primer is widely used in the coating of various steel structures in atmospheric environments. For example: inner walls of oil storage tanks, bridges, containers, iron towers, ship hulls, construction steel structures, etc.

As with all coating applications, surface preparation is critical, and you should read the instructions that come with the primer. In any case, conventional primers are more tolerant to the surface condition that is the zinc-rich.



EPOXY CLEAR COAT 2K

Clear epoxy coating on metal provides excellent protection against corrosion, chemicals, water, and abrasion by forming a tough, chemical-resistant barrier, ideal for enhancing metal's lifespan in harsh environments, though proper surface prep (cleaning to "bright metal") is crucial for adhesion, with options ranging from liquid paints to powder coatings for diverse applications like automotive parts, tanks, and hardware.



ZINC SILICATE PRIMER 2 PACK

Zinc silicate primers are used to protect steel surfaces from corrosion. It is one of the more effective means of sealing critical equipments from moisture, protecting it from rust and corrosion.

We recommended for application on suitably primed steel structure exposed to chemical and industrial environment in refineries, petrochemicals, paper and pulp plants, and fertilizer industries

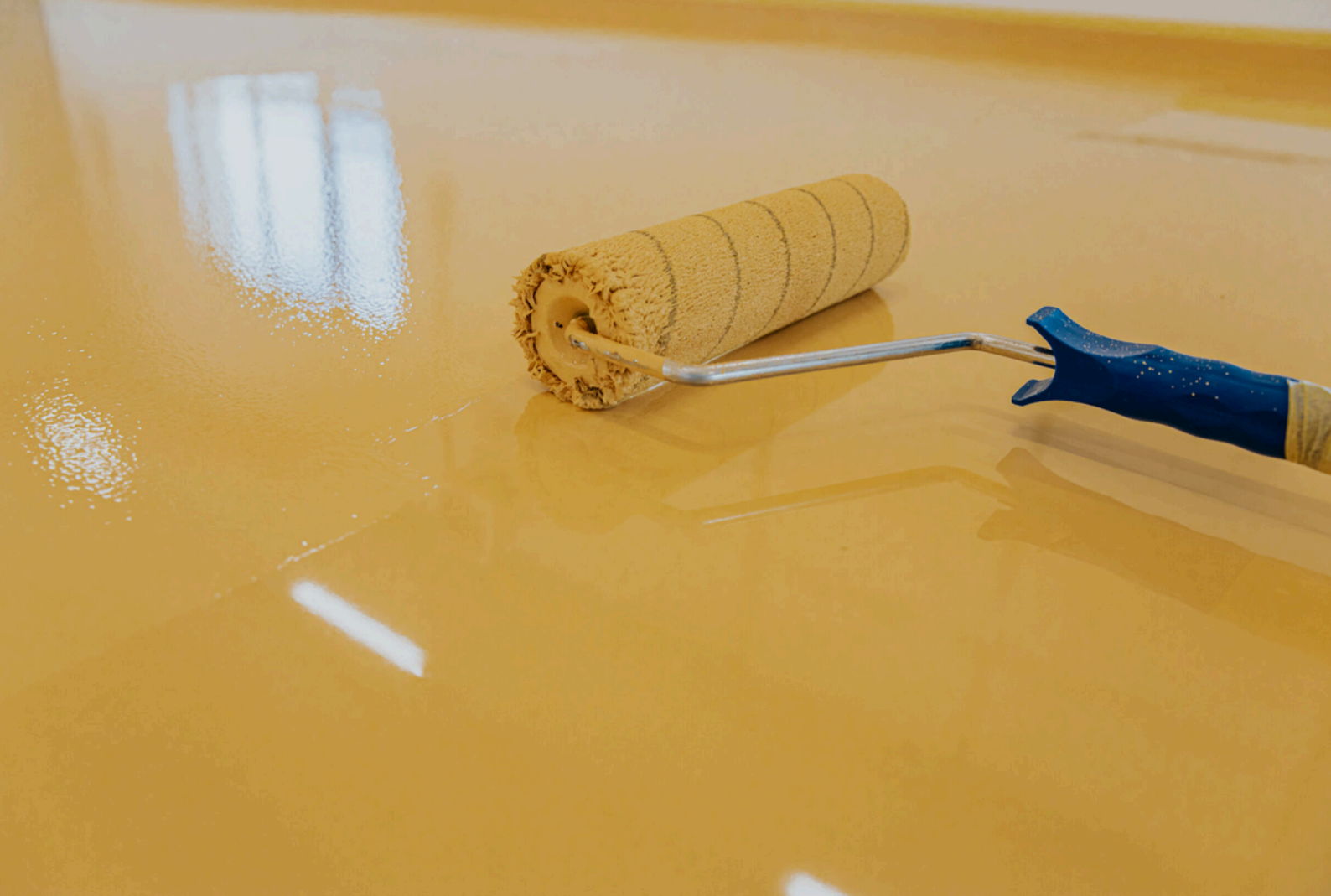


ZINC YELLOW PRIMER

- Zinc Yellow Primer is an ideal primer for saline weather and heavily corrosive conditions. It is one of the best zinc primer suitable for mild steel surfaces.
- Zinc Yellow Primer is formulated with a special type of synthetic alkyd binder and micro zinc pigment to withstand high degree corrosion.



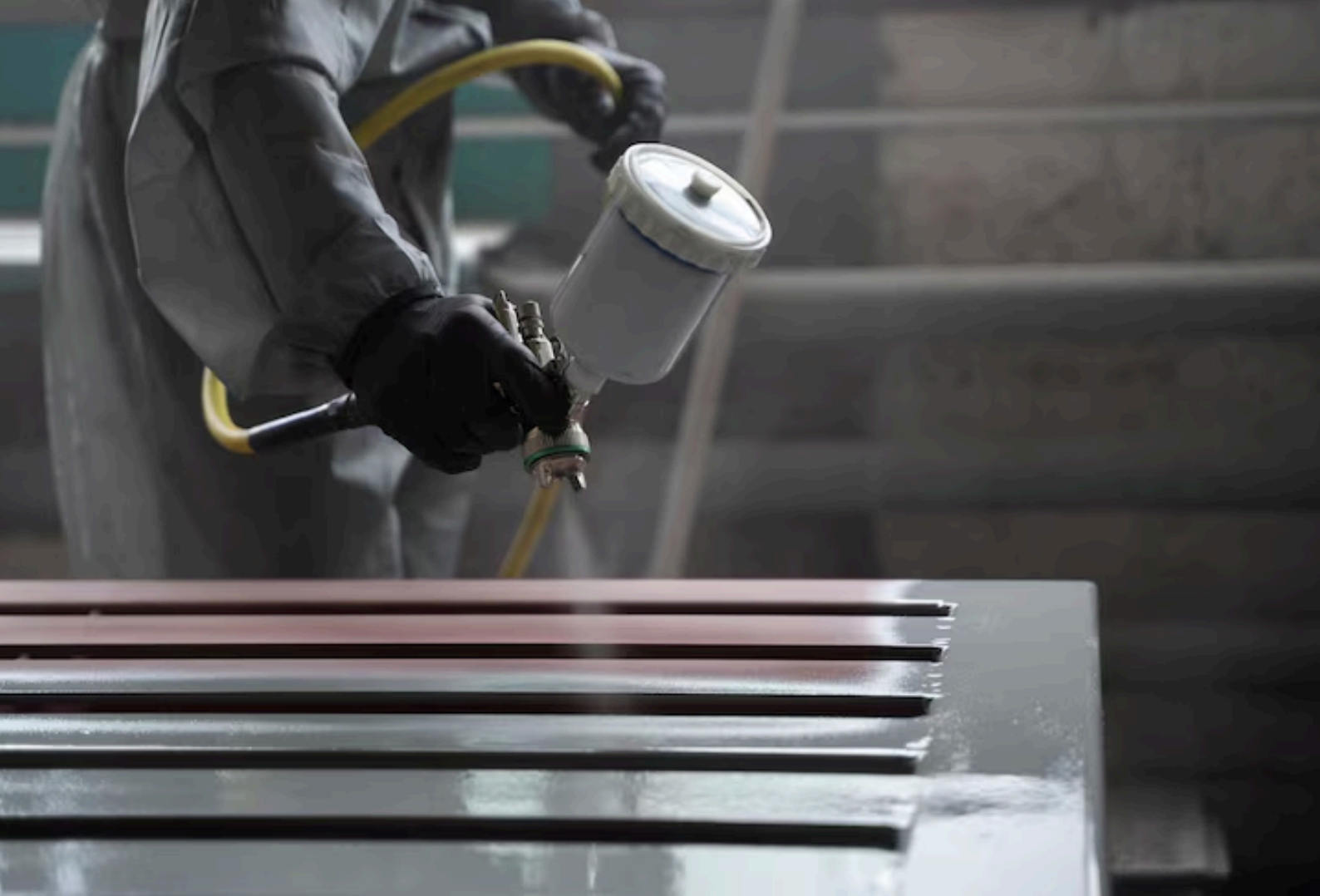
**EPOXY PAINT 2K
(AVAILABLE IN
RAL-SHADES IS)**



POLYURETHANE PAINT (PU) 2K

Polyurethanes are selected for industrial and architectural coating systems as finish coats that are usually applied over primer and intermediate coats that together combine the individual coating features to produce long term protective coating systems.

Polyurethane, mostly in the form of flexible foam, is one of the most popular materials used in home furnishings such as furniture, bedding and carpet underlay. As a cushioning material for upholstered furniture



PU CLEAR COAT 2K

PU (Polyurethane) clear coat is a durable, protective finish for wood, concrete, and metal, offering excellent scratch, chemical, water, and UV resistance, available in glossy or matte finishes for furniture, floors, and outdoor surfaces, typically applied in multiple coats after proper surface prep. It's a versatile coating known for clarity, toughness, and enhancing the lifespan of the coated item



ZINC CHROMET RED OXIDE PRIMER

Red Oxide Zinc Chromate Primer can be applied over porous materials to smoothen the surface to achieve the best results when subsequent coats are applied. Its anti-corrosion properties eliminate the possibilities of rusty surfaces in ferrous metals.



BITUMINOUS ANTI-CORROSIVE PAINT BLACK

Black Bitumen Paint is general purpose paint for waterproofing and the weather protecting of steelwork and concrete. A solvent based, general purpose, bituminous black paint for waterproofing and weather protecting of steelwork, asphalt, wood and concrete. When dry it forms an odourless and taint-free bitumen film.

Bitumen paint is a durable material that can last a relatively long time. When applied to a felt roof bitumen will usually last 2 to 3 years before it begins to dry out.



CHLORINATED RUBBER PAINT

Chlorinated rubber paint is a general purpose coating that can be used for interior and exterior applications, from road markings to swimming pools and everything in between. It can be painted on a variety of surfaces, including metal, concrete, road surfaces and manhole covers, and dries within a matter of hours.



ROAD MARKING PAINTS

- Durability. One of the primary characteristics that set thermoplastic road marking paint apart from its alternatives is its exceptional durability.
- High Reflectivity.
- Quick Drying Time.
- Resistance to Fading.
- Adherence to Various Surfaces.
- Cost-Effectiveness.



ANTI SKID PAINT

Anti-skid paint was designed to be applied to surfaces to increase grip – no matter the conditions.


Anti-skid coating durability allows for its employment in areas that experience high volumes of foot traffic, as well as light traffic with rubber wheels.



AEROSOL PAINT

Aerosol paint is useful for **quick, semi-permanent marking on construction and surveying sites**. Inverted cans for street, utility or field marking can be used upside-down with an extension pole.

They are also very popular in Industrial application for maintenance related products.

A low-angle, upward-looking shot of a large red ship's hull. A worker in a grey jumpsuit and blue hard hat stands on a metal lift platform, reaching up to paint the hull. The hull is a vibrant red with several dark rectangular and circular openings. The sky is a clear, deep blue. The text "Dive into the Ocean of Marine Paints" is overlaid in white serif font in the lower half of the image.

Dive into the Ocean of Marine Paints



ANTIFOULING PAINTS FOR SHIPS

Anti-fouling paints are used to coat the underwater surfaces of ships to prevent sealife such as algae and molluscs attaching themselves to the hull, thereby slowing down the ship and increasing fuel consumption.



ANTIFOULING PAINT FOR FIBER BOATS

The hard and glossy finish of this paint is extremely sturdy. It's best suited for fiber boats and may crack if painted onto other materials. Multiple layers of its thin coats need to be applied by either rolling and tipping or spraying.

In modern times, antifouling paints are formulated with cuprous oxide (or other copper compounds) and/or other biocides—special chemicals which impede growth of barnacles, algae, and marine organisms.

DECORATIVE PAINTS





SYNTHETIC HIGH GLOSS ENAMEL

NOC High Gloss Synthetic Enamel are non-mercuric and non-leaded paints.

- Provides rich texture and high gloss finish with excellent surface protection.
- Excellent adhesion.
- Withstand extreme weather conditions.
- Free from lead and mercury.



EXTERIOR TEXTURE PAINT

Exterior texture paint is a thick, durable coating that provides an aesthetic finish to external walls while offering significant protection from the elements and hiding surface flaws. It is a versatile choice for homeowners looking to enhance their property's curb appeal and longevity. Exterior texture paints typically consist of advanced formulations, often water-based acrylic emulsions, incorporating coarse materials such as sand, crushed stone, silica, gypsum, and polymers



SURFACER CEMENT PRIMER WHITE

It is specially formulated priming coat, which prevents diffusion of alkali with moisture from base to finish coat. it produces a smooth, non-absorbent surface with good water resisting properties



RED OXIDE METAL PRIMER

- **GOOD OPACITY.** Gives excellent hiding and protection.
- **GOOD COVERAGE.** It gives good coverage, so you need less material.
- **GOOD ADHESION.** Gives adhesion on all metal surfaces.
- **FLOW AND LEVELLING PROPERTIES.** Produces an extremely smooth finish.



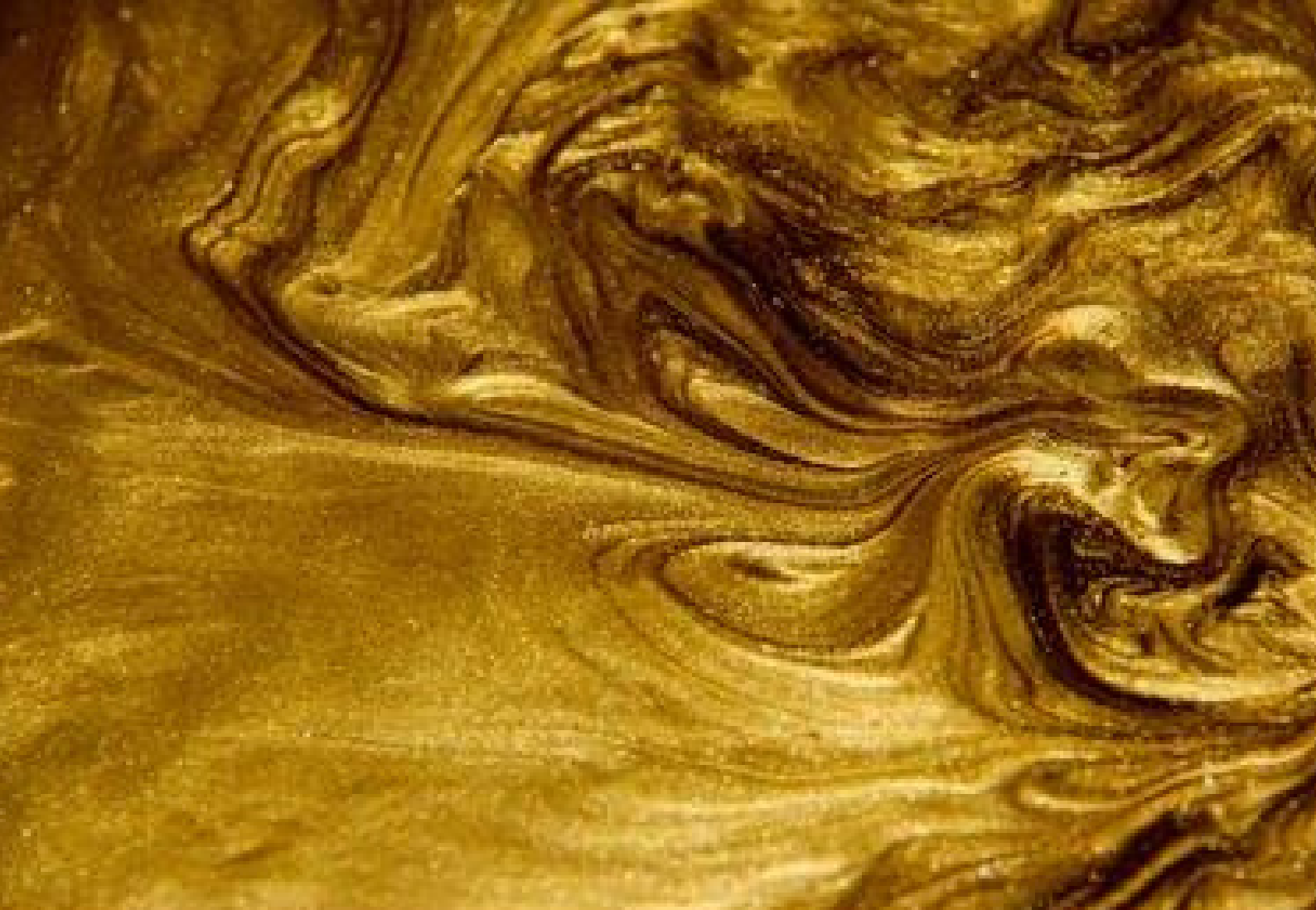
BLACK/GREEN BOARD PAINT

- Characteristics: High-quality pigments ground in an alkyd medium.
- Advantages: Excellent covering capacity.
- Finish: Matt.
- Application: By brush, roller or spray.
- Thinning: Where necessary and for spray application thin with White Spirit.
- Drying Times: Re-coatable in 16 hours.



ALUMINIUM PAINT(SILVER)

- Maximum Colour and Gloss Retention. Good Hiding and Coverage. Better Durability.
- Flow and Leveling: Satisfactory. Consistency: Smooth & Uniform. Flexibility & Adhesion: Excellent.



GOLDEN PAINT

Golden Paintworks Metallic Paint , interior acrylic paint that is highly pigmented with iridescent mica to produce strong metallic effects. Perfect for any decorative project from up-cycling that treasured furniture piece, to adding some drama to a feature wall, lighted ceiling cap, or crown molding.



HAMMERTONE FINISH PAINT

Hammer paint or Hammertone as it is commonly referred to as, is a specialist coating with a surface that looks like hammered metal once it is dry. A hammered coating looks as though it has been attacked with a hammer, without damaging the paint or the substrate.

Hammer paint is often used to beautify technical apparatus or as a protective coating. The optical advantage of hammer paint is that surfaces look acceptable even if the underlying surface is not flat and smooth.



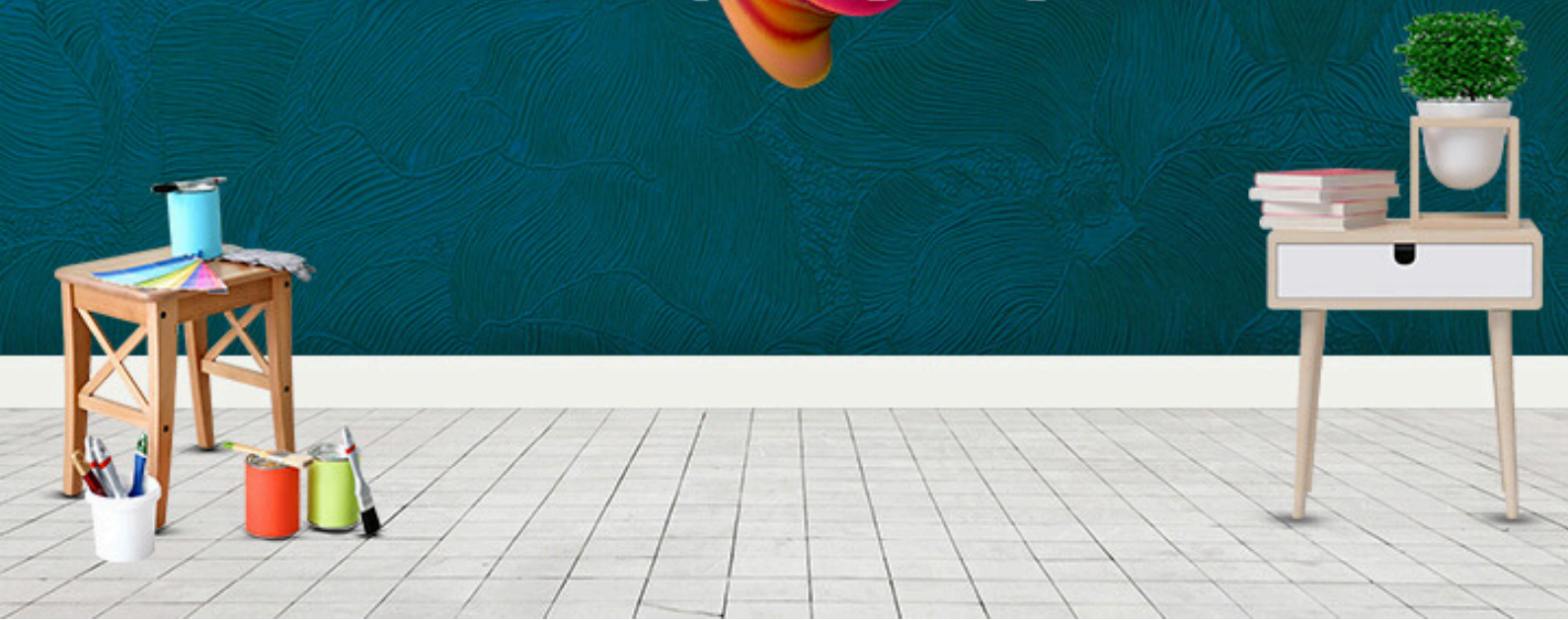
WATER BASE PRIMER

INTERIOR/EXTERIOR

- It shields the surface from stains.
- It covers porous surfaces.
- It improves the adhesion of the surface to the final coat.
- It prevents and eliminates odour.
- It conceals worn-out paint on your furniture.
- Always choose the best primer for your painting needs.



Interior Emulsion



- Emulsion paints have low volatile organic compound (VOC) levels meaning they do not emit as many chemicals into the air
- Higher sheen
- Durable finish

Exterior Emulsion



- VALUE FOR MONEY. Does not require any curing thereby saving time and cost during application.
- ANTI-ALGAL. Provides better anti-algal protection than cement paint in dry weather conditions.
- WEATHER GUARD. Excellent resistance to chalking, cracking & peeling as compared to cement paints.
- AVAILABLE SHADES.



Funcryl

Color That Inspires.

Funcryl

ACRYLIC COLOR

ARTISTIC ACRYLIC COLRS

- Funcryl Acrylic Colours are designed for multi-surface creativity, offering smooth application and long-lasting results. They adhere beautifully to wood, glass, canvas, fabric, and terracotta without losing vibrancy. Whether you're painting pots, customizing home décor, or creating artwork on canvas, Funcryl delivers consistent performance. The colours dry quickly, resist fading, and maintain their rich finish on both porous and non-porous surfaces. Funcryl makes every project—big or small—easy, vibrant, and professional.

AVAILABLE IN PACKING SIZE OF

- 100ML
- 500ML
- 1L



ISO 9001:2015

CONTACT US

Mobile no. 9820842572
9820842573

E-mail us
amcopaint@gmail.com

AMCO PAINTS

Sec no 821, plot no.39,
Chintupada,
Village Mahim,
Palghar (W)-401404